

Detroit Diesel Series 92 Engine

Fully reconditioned



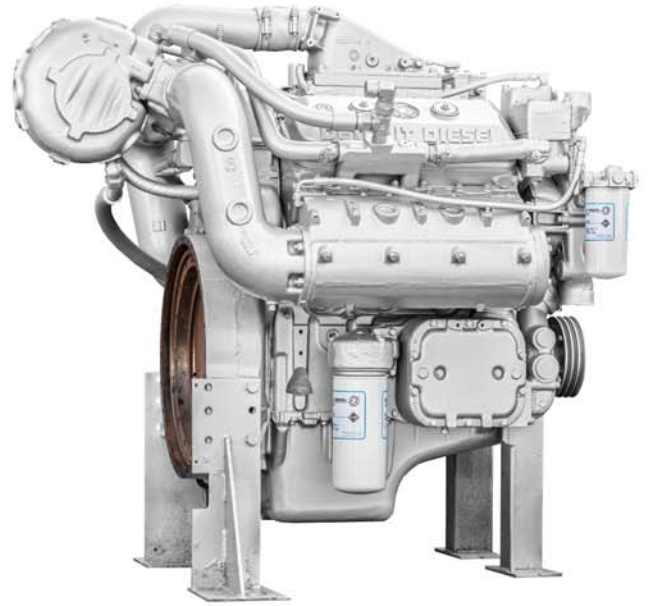
APPLICATION

Remanufactured to OEM specifications, this two cycle 92 series engine has a proven track record in many applications, operating in the world's harshest environments.

This particular model and specification has historically been the heart of appliances and applications such as liquid nitrogen converters for the petroleum market.

With twice as many power strokes per engine revolution, a Detroit Diesel two-stroke engine produces more power than a four-stroke diesel of the same displacement, operating on the same fuel.

A classic design with iconic components such as the bypass blower, unit fuel injectors and cross head pistons and is exceptionally durable.



General Specifications

Basic Engine	6V-92TA
Model	8063-7473
Rated Power	490 BHP (366kW) at 2,100 RPM
Number of cylinders	6
Aspiration	Turbo after cooled
Bore	4.84 in (123mm)
Stroke	5 in (127mm)
Displacement	552 cu in (9.05 litres)
Engine type	2 cycle-Vee
Compression ratio	17:1
Rotation (from flywheel end)	CCW
Flywheel and flywheel housing	SAE 1
Governor	Mechanical - variable speed
Flywheel teeth (ring gear)	118
Oil capacity	High limit 20qt (19 litres)
Coolant capacity (Engine only)	35qt (33 litres)
Dimensions (*approximately)	
Length	53.4 in (1,356mm)
Width	41.3 in (1,049mm)
Height	45.8 in (1,163mm)
Weight, dry (*approximately)	2,150lb (975kg)

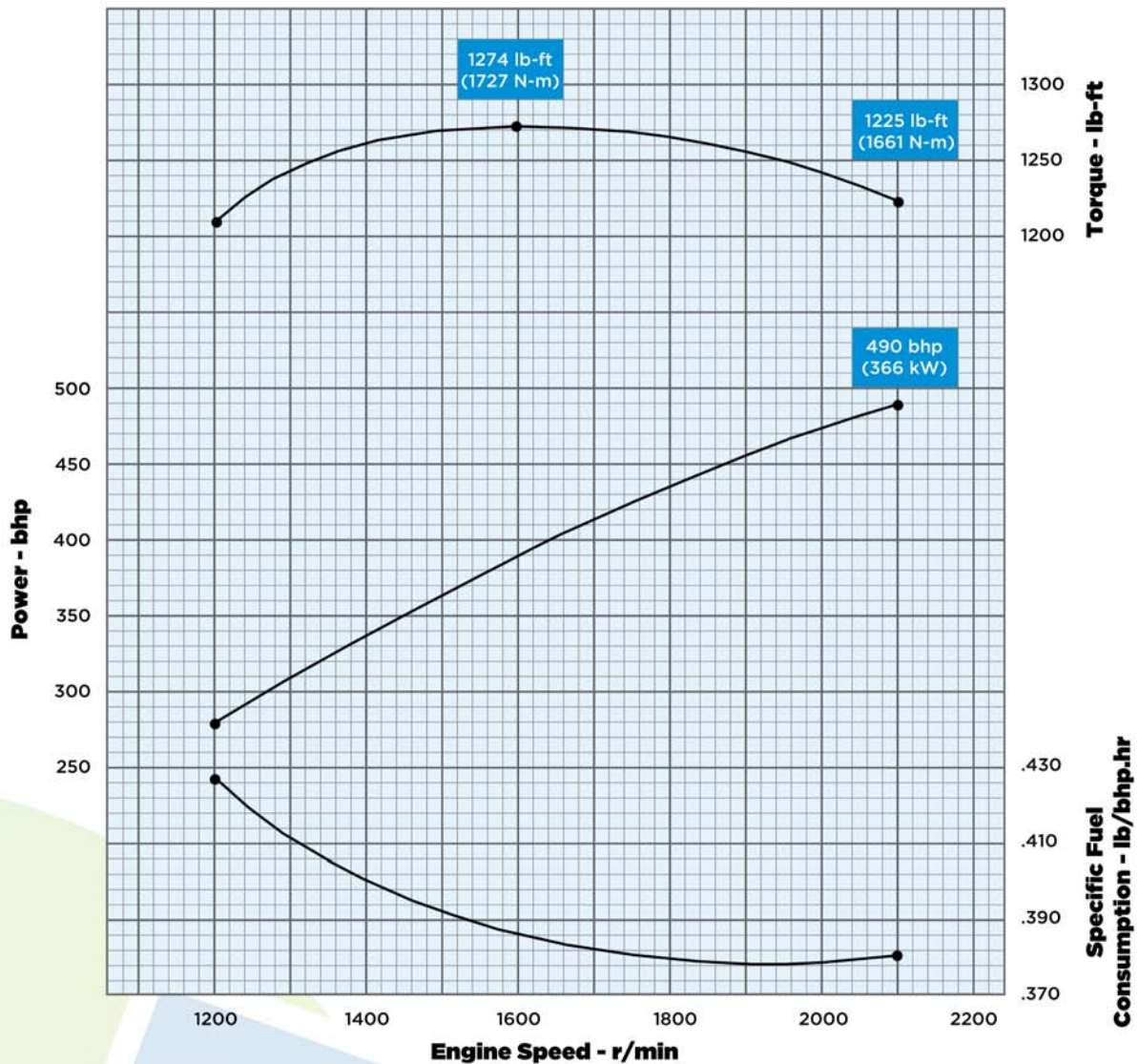
Standard Equipment

- Oil and fuel filters
- Oil pan
- Dipstick and filler
- Thermostats and housings
- Lube oil cooler (24 plate)
- Fuel injectors 5227040
- Water cooled manifolds and associated connections
- Turbocharger (single) TW7301 AR1.19
- After cooler
- Blower - with bypass valve
- Flywheel - SAE#1
- Flywheel housing - SAE#1
- Governor - mechanical variable speed
- Lifter eyes
- Water, fuel and oil pumps
- Crankcase ventilation to atmosphere
- Fuel, air and water lines
- Documentation to include engine build document in accordance with publication 6SE379 and dynamometer test certificate
- Painted, primed and topcoat to required colour

Performance Curve

Model: 6V-92TA
Rating: 490bhp @ 2100 r/min
 1274lb-ft @ 1600 r/min

Curve No: E4R-8063-32-11
Rev/Date: New/3-02-93



Power output guaranteed within 5% at SAE J1995 conditions: 77°F (25°C) air inlet temperature: 29.31 in Hg (99kPa) dry barometer 100°F (39°C) fuel inlet temperature (.853 specific gravity at 60°F) Air inlet restriction 10 in H ₂ O (2.5kPa) Exhaust back pressure 1.5 in H ₂ O (3.7kPa)	Conversion factors: Power: kW = bhp x 0.746 Fuel: kg/kW.hr = lb/bhp.hr x 0.608 Torque N-m = lb-ft x 1.356	Turbo: TW83 (1.19 A/R) Injector: 5227040
--	--	---

Optional Equipment

ATEX compliant package services include:

- | | | |
|--|--|--|
| <ul style="list-style-type: none"> • Charging system • Exhaust gas cooling kit • Spark arrestor silencers • Starter motor – air or electric format • Skid base – Engine or power-pack format • Auxiliary drives, enclosed clutches, hydraulic pumps and compressor | <ul style="list-style-type: none"> • Control system – Various options available • Protection devices – various options available and include: <ul style="list-style-type: none"> • Exhaust temperature • Water temperature • Overspeed | <ul style="list-style-type: none"> • Air inlet flame trap • Power take offs • Fan and drive • Air cleaner • Radiator • Fuel system |
|--|--|--|

All options can be supplied or mounted

General arrangement 2SA784 and complete engine technical specification data sheet available upon further request.